

mySCADA PRO Series

Installation and Handling Manual

Version: 6.2

Date: 1.2.2015

Thank you for using mySCADA PRO on your PC. mySCADA is a full featured HMI/SCADA system with advanced options such as vector graphics views, advanced trending, complex alarming, data-logging and user access options.

mySCADA PRO is multiplatform HMI/SCADA solution available for:

- MS Windows 7 and above
- Mac OS X
- Linux

Following sections explains how to install and operate mySCADA PRO system on each platform.

Windows Installation

mySCADA for Windows is supported on Windows version 7 and above. mySCADA is provided as a self installation exe package. Double click on the installation package to perform installation. After installer finishes, please reboot PC to finish installation.

Mac OS X Installation

mySCADA for MAC OS X is available for Mac OS 10 version 8 and above. Mac installer is provided inside DMG package. To install the mySCADA PRO do following:

1. Mount dmg package by double clicking it.
2. Double click on **mySCADA_PRO_v6_SIGN.mpkg** file inside mounted dmg.
3. Follow onscreen instructions to finish installation

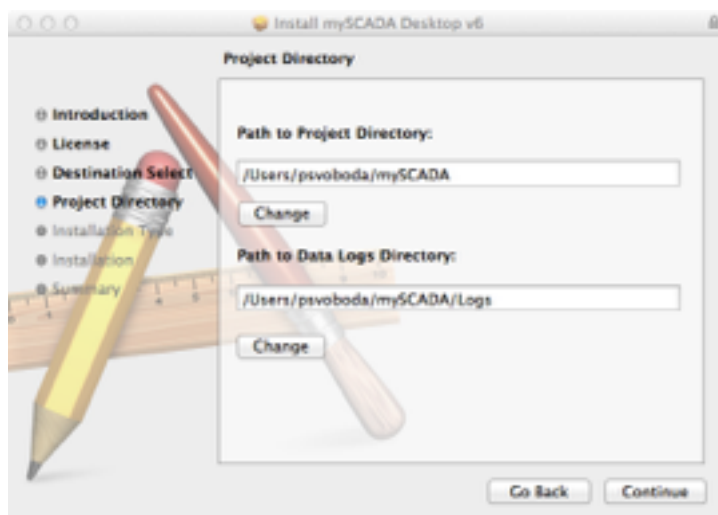


Figure 1 During installation, you can specify project data and data-log files locations.

4. Reboot your PC.

Linux Installation

mySCADA for Linux was tested on following distributions: Ubuntu, Linux Mint, Read Head, and SUSE. Installer bundles all required functionality and dependency modules so it should work out of the box for most Linux distributions. Installer comes in two versions 32 bit and 64 bit, please use a version to match your OS version.

Linux installer is distributed as sh package. To install follow this steps

1. Open a terminal and change directory to the location of installation package sh
2. Make sh package executable by running:
sudo chmod 777 ./myscadaPRO6_i386.sh
3. Run installer:
sudo ./myscadaPRO6_i386.sh
4. Reboot your system

Using mySCADA - WWW access

Once is mySCADA PRO is installed, you can access the HMI over regular web browser. Tested browsers are:

- MS Internet Explorer IE (version 9 and above)
- Chrome
- Safari
- Firefox

Open your web browser and into address bar enter <http://localhost> then you will be presented with introduction screen. You can go over demo projects or look at the manuals and tutorials.

WWW Access - Advanced Options

You can control how is mySCADA shown and behaves using simple parameters passed in a address field of your web browser.

By default, if you enter IP address of a PC where is mySCADA runtime, you will get following address:

http://127.0.0.1/visu_en.html



Language:

To load a web page in different language enter the address with language code:

- English: http://127.0.0.1/visu_en.html
- German: http://127.0.0.1/visu_ge.html
- Japan: http://127.0.0.1/visu_jp.html
- Czech: http://127.0.0.1/visu_cs.html

Mobile version on desktop:

mySCADA PRO uses responsive design on its web pages. When loaded on desktop you will see version optimized for mouse control, you can change this to mobile version optimized for touch devices:

- Desktop version: http://127.0.0.1/visu_en.html
- Mobile version: http://127.0.0.1/visumobilemenu_en.html

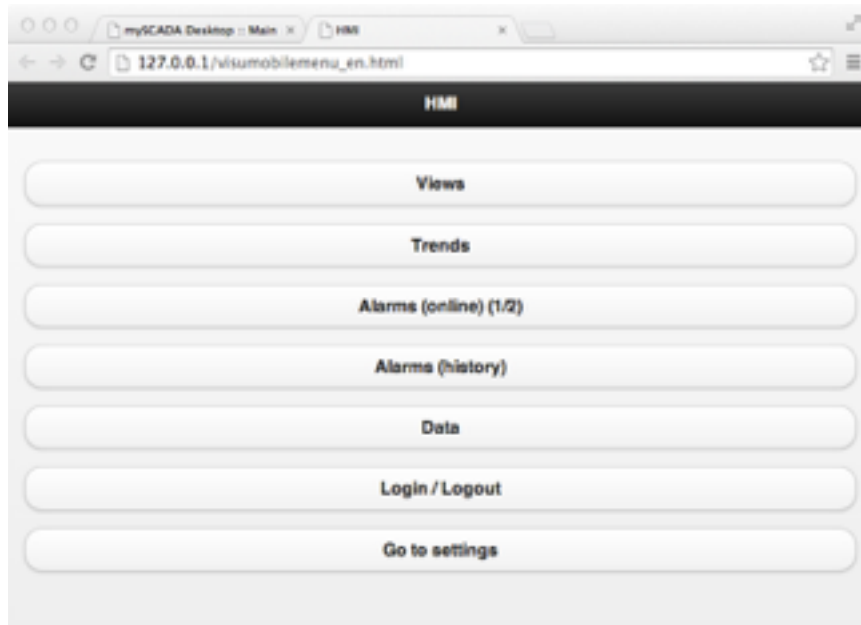


Figure 2 Mobile version optimized for touch devices

*TIP: you can choose your language by changing **en** in link for your language.*

Hiding menu:

To hide a mySCADA Default menu, use parameter after your link:

#hidemenu - will hide menu

Usage examples:

Desktop version: http://127.0.0.1/visu_en.html#hidemenu

Mobile version: http://127.0.0.1/visumobilemenu_en.html#hidemenu

Adding virtual keyboard:

To use virtual keyboard to enter parameters in mySCADA, use parameter after your link:

#virtkbd - add virtual keyboard

Usage examples:

Desktop version: http://127.0.0.1/visu_en.html#virtkbd

Mobile version: http://127.0.0.1/visumobilemenu_en.html#virtkbd

Combining hiding menu and virtual keyboard

You can combine virtual keyboard and hiding menu parameters by using **&**

Usage examples:

Desktop: http://127.0.0.1/visu_en.html#hidemenu&virtkbd

Mobile: http://127.0.0.1/visumobilemenu_en.html#hidemenu&virtkbd

Opening mySCADA at specified View, Trend, etc.:

To open www at specified view, trend, data-log or alarm view, use one of the parameters after your link. When you specify a name, please use only ASCII characters accepted in URL links, all special characters must be escaped (for example a “space” is escaped as “%20”). You can use online URL escape tool such as <http://meyerweb.com/eric/tools/dencoder/>

Parameters:

show view specified by its name:
show_view=VIEWNAME

show trend specified by its name:
show_trend=TRENDNAME

show online alarms:
show_onlinealarms

show history of alarms:
show_histoalarms

show user definable data-log view:
show_datalogs

show data-log view specified by its name:
show_dlgview=DLGVIEWNAME

show user actions:
show_usra

Usage examples:

Desktop version:

http://127.0.0.1/visu_en.html#show_view=view2

Mobile version:

http://127.0.0.1/visumobilemenu_en.html#show_view=view2

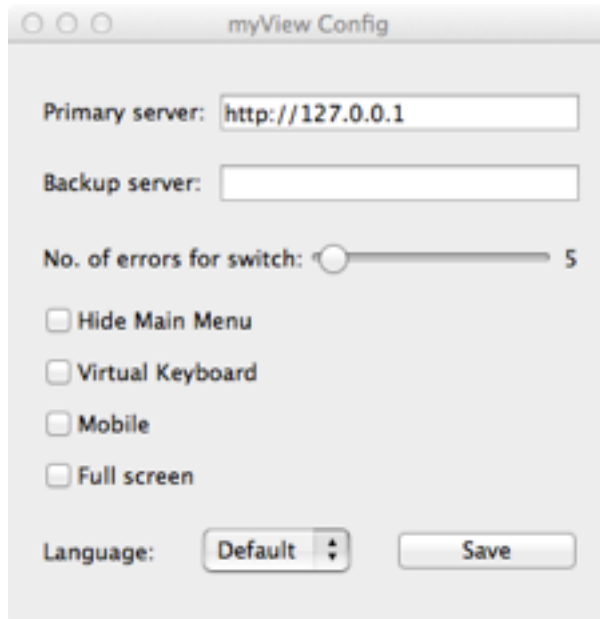
Using myVIEW

myVIEW is a viewing client for mySCADA products. You can use myVIEW to comfortably view and control your HMI without using a web browser. myVIEW is automatically installed with mySCADA PRO.



Figure 3 myVIEW application, bundled with mySCADA runtime.

When myVIEW is loaded, it automatically connects to the default IP address **127.0.0.1**. You can change how myVIEW behaves in settings of a program. On Windows or Linux run myVIEW Config application, on Mac use Settings menu inside myVIEW application. You will be presented with following dialog:



Primary server: default IP address to which myVIEW should bind, this is IP address of your PC where you have installed mySCADA PRO.

Backup server: if you intent to use backup PC for redundancy, or if you access your PC with mySCADA from multiple IP addresses you can fill in also backup server IP. In a case primary server is not responding, myVIEW will automatically switch to backup server.

No. of errors for switch: how many no or false responses to wait before switching to backup server.

Hide Main Menu: will hide mySCADA main menu – useful for Operators panels or custom layout of views. You can switch between views using open command provided by project programmer.

Virtual keyboard: if you need data entry and do not have physical keyboard (eg. on Touch panel) enable this option

Mobile: will force to show web pages optimized for mobile devices. If you use mySCADA with touch device you can find this option useful. **When in mobile www use swipe left gesture to enter menu!**

Full screen: show myVIEW in full screen mode.

Language: override the default language.

TIP: If you need to install myVIEW without mySCADA runtime, you can download an independent installation package from our web page <http://www.myscada.org>.

Loading custom project

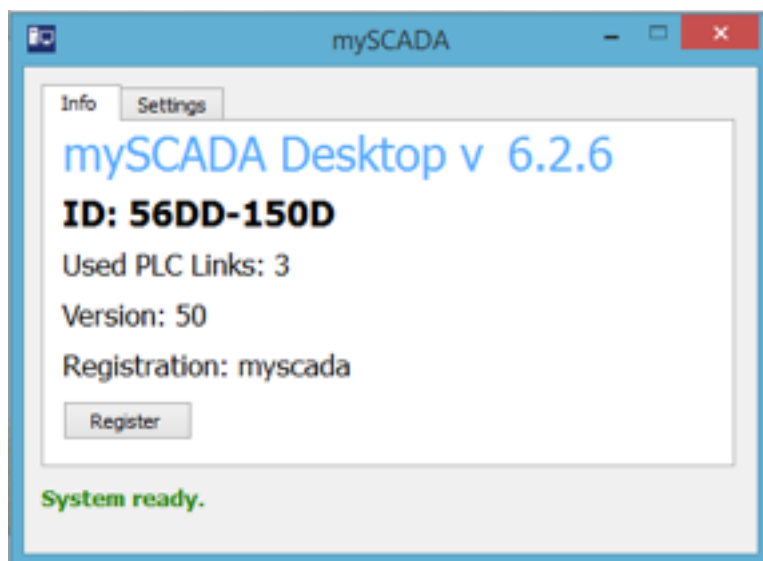
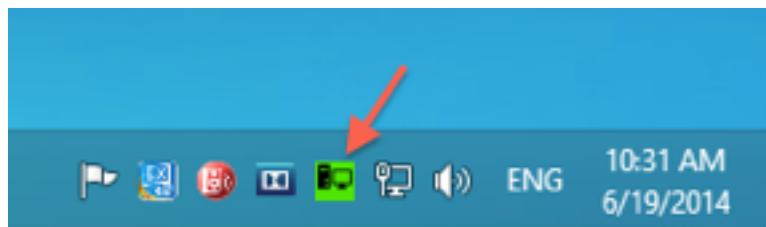
Download and install myPROJECT Designer from our web pages <http://www.myscada.org>. Create your project in Designer and download it to your PC running mySCADA PRO. If unsure, follow the Getting started tutorial provided with myPROJECT Designer.

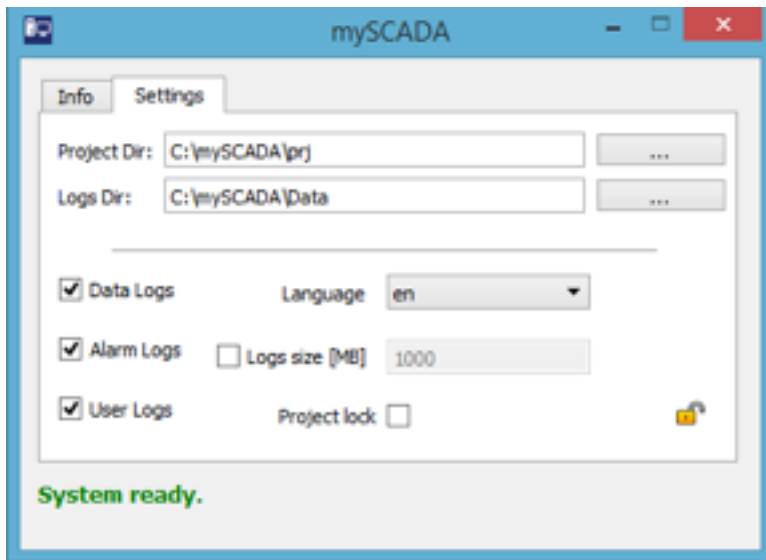
Systray Settings

When mySCADA is installed, you can modify some parameters to tune up the system. With mySCADA PRO monitoring and setup utility is bundled. You can find it under Program Files -> mySCADA. By default, this utility is launched on startup, or you can launch it manually also.

Windows and Linux:

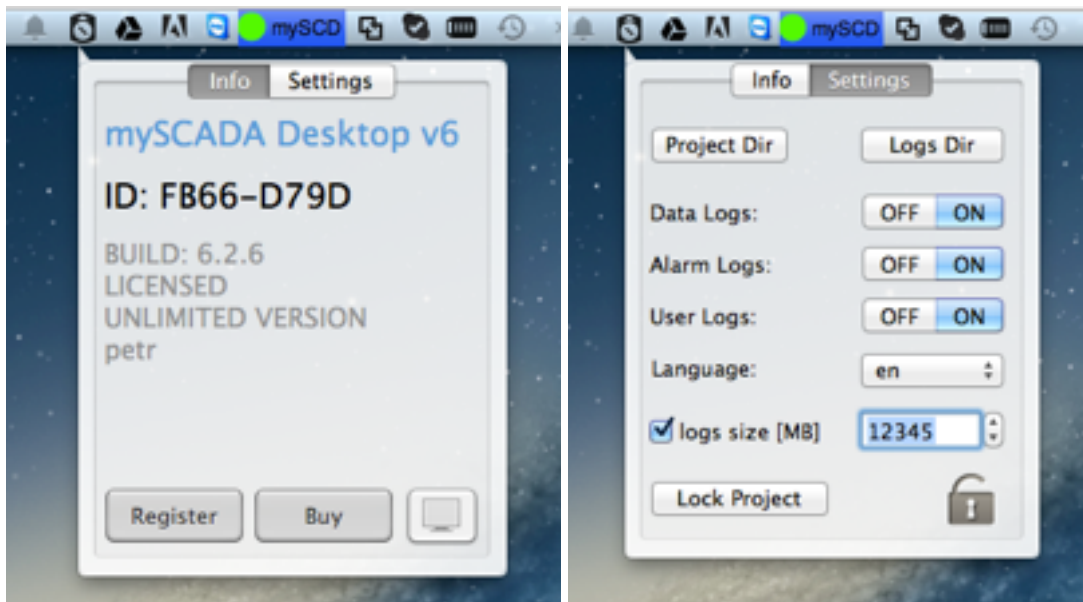
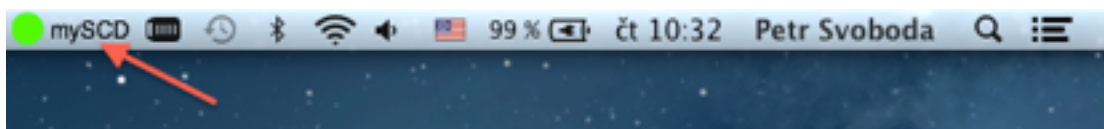
On windows and Linux, monitoring utility can be opened from a Status Bar.





Mac OS X:

On Mac OS, utility is located in notification area on a top system bar:



Info Screen

Info screen shows current status of mySCADA Runtime.

Parameter	Description
ID	This is unique ID of your PC. If you register mySCADA, you should use this ID.
Used PLC Links	Number of PLC links used in your project. This is important for buying adequate version.
Version	Number of PLC links available. Depends on registered version
Registration	Name of registered entity

Parameters screen

Parameters screen enables you to change important parameters of mySCADA behavior:

Parameter	Description
Project Dir	Directory of project data
Logs Dir	Directory where all database files are stored. This includes all data-logs, history of alarms, history of user actions and system logs
Data logs	Uncheck to disable data-logging (Data-logs)
Alarm logs	Uncheck to disable logging of alarm history
User logs	Uncheck to disable logging of user actions history
Log Size	When enabled, you can specify maximum size (in Mbytes) of database files. In this case, when reaching a limit, oldest records are deleted as new are logged.
Language	Change default language of mySCADA HMI – accessed over web browser
Project Lock	Check to disable loading of new project into the system.
Lock icon	You can password protect the settings screen. Click on the lock icon to do so.