

myPRO

Installation and Handling Manual

Version: 7

Date: JAN 2016

Thank you for using myPRO on your PC. mySCADA is a full featured HMI/SCADA system with advanced options such as vector graphics views, advanced trending, complex alarming, data-logging and user access options.

myPRO is multiplatform HMI/SCADA solution available for:

- MS Windows 7 and above
- Mac OS X
- Linux

Following sections explains how to install and operate myPRO system on each platform.

Windows Installation

myPRO for Windows is supported on Windows version 7 and above. myPRO is provided as a self installation exe package. Double click on the installation package to perform installation. After installer finishes, please reboot PC to finish installation.

Mac OS X Installation

mySCADA for MAC OS X is available for Mac OS 10.8 and above. Mac installer is provided inside DMG package. To install the mySCADA PRO do following:

1. Mount dmg package by double clicking it.
2. Double click on **mySCADA_PRO_v7.pkg** file inside mounted dmg.
3. Follow onscreen instructions to finish installation

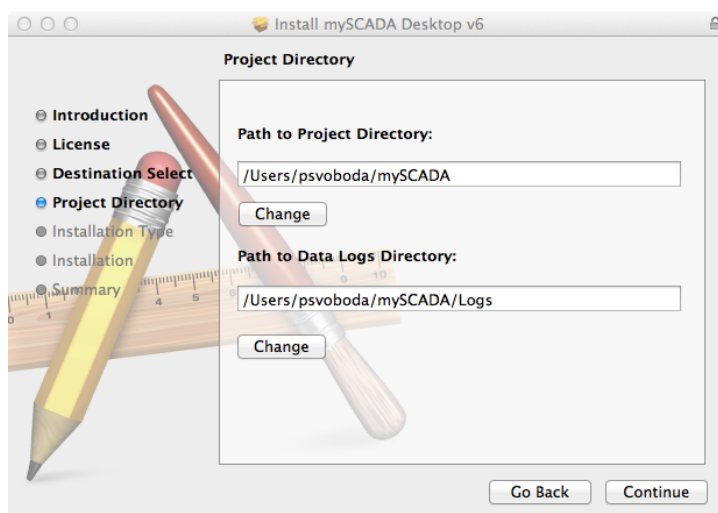


Figure 1 During installation, you can specify project data and data-log files locations.

4. Reboot your PC.

Linux Installation

mySCADA for Linux was tested on following distributions: Ubuntu, Linux Mint, Red Hat, and SUSE. Installer bundles all required functionality and dependency modules so it should work out of the box for most Linux distributions. Installer comes in two versions 32 bit and 64 bit, please use a version to match your OS version.

Linux installer is distributed as sh package. To install follow this steps

1. Open a terminal and change directory to the location of installation package sh
2. Make sh package executable by running:
sudo chmod 777 ./myscadaPRO7_i386.sh
3. Run installer:
sudo ./myscadaPRO7_i386.sh
4. Reboot your system

Using myPRO – WWW Access

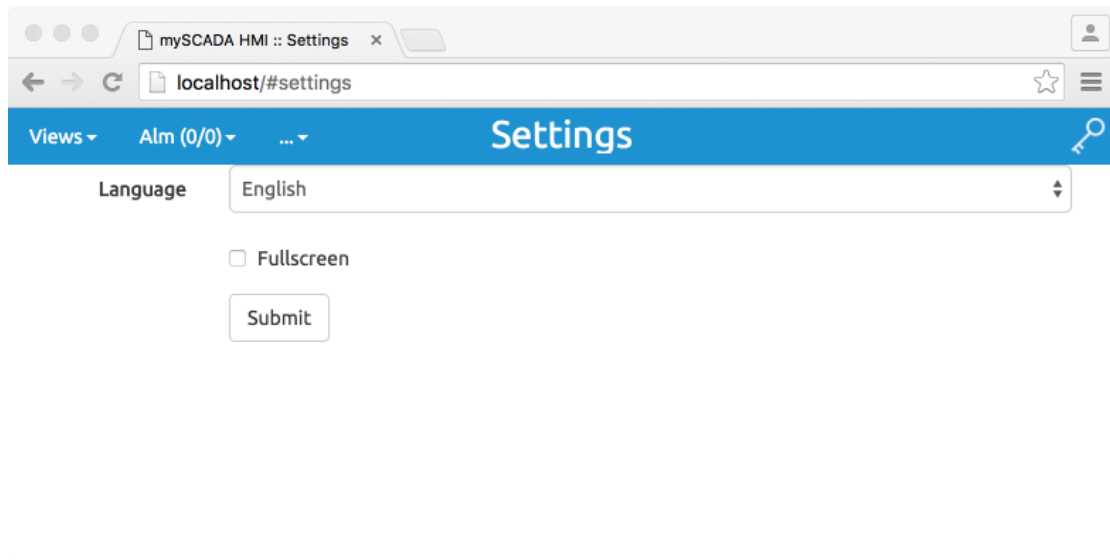
Once myPRO is installed, you can access the HMI over regular web browser. Tested browsers are:

- MS Internet Explorer IE (version 9 and above)
- MS Edge
- Chrome
- Safari
- Firefox

Open your web browser and into address bar enter <http://localhost> then you will be presented with introduction screen. You can go over demo projects or look at the manuals and tutorials.

WWW Access – Advanced Options

You can control how mySCADA is shown and behaves using settings screen. Press SHIFT+S to enter settings screen.



In the setting window you can change default language and you can hide Top menu by clicking Full-screen option.

Opening mySCADA at specified View, Trend, etc.:

To open www at specified view, trend, data-log or alarm view, use one of the parameters after your link. When you specify a name, please use only ASCII characters accepted in URL links, all special characters must be escaped (for example a “space” is escaped as “%20”). You can use online URL escape tool such as <http://meyerweb.com/eric/tools/dencoder/>

You can easily see what parameter to pass if you look at the address bar of your browser.

Using myVIEW

myVIEW is a viewing client for mySCADA products. You can use myVIEW to comfortably view and control your HMI without using a web browser. myVIEW is automatically installed with myPRO.

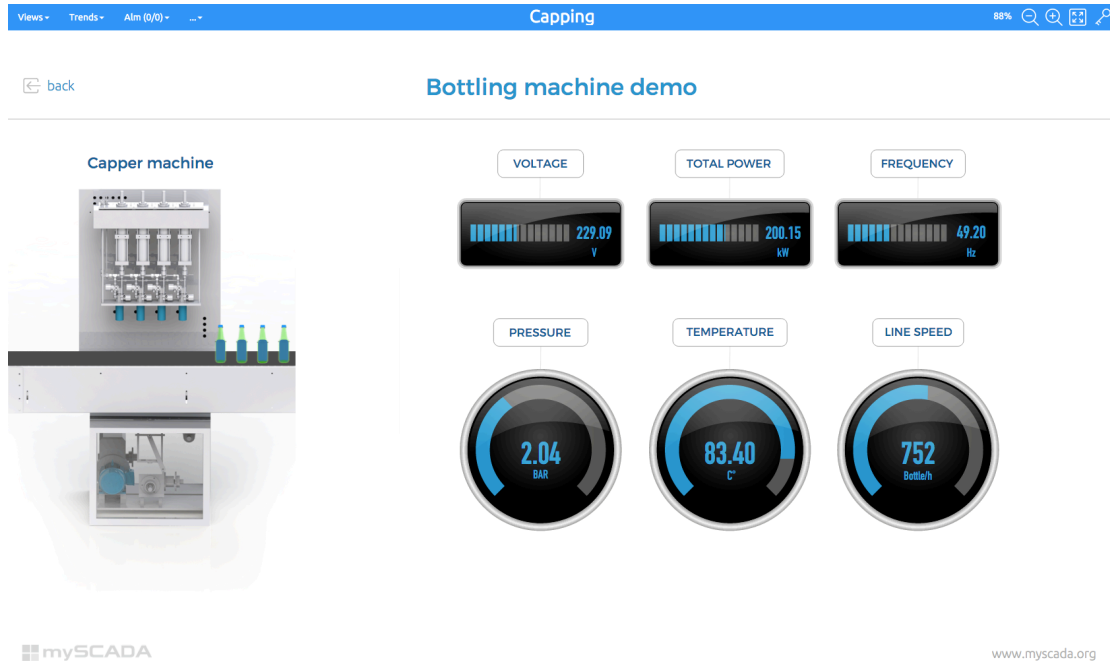
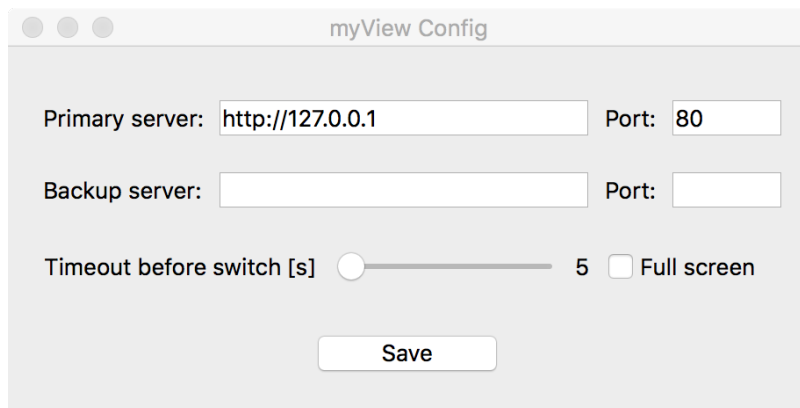


Figure 3 myVIEW application, bundled with myPRO runtime.

When myVIEW is loaded, it automatically connects to the default IP address **127.0.0.1**. You can change how myVIEW behaves in settings of a program. To get into settings dialog use shortcut SHIFT-S inside myVIEW application. On Windows or Linux you can also run myVIEW Config application to get into settings.



Primary server: default IP address to which myVIEW should bind, this is IP address of your PC where you have installed myPRO.

Backup server: if you intent to use backup PC for redundancy, or if you access your PC with mySCADA from multiple IP addresses you can fill in also backup server IP. In a case primary server is not responding, myVIEW will automatically switch to backup server.

No. of errors for switch: how many no or false responses to wait before switching to backup server.

Full screen: show myVIEW in full screen mode.

TIP: If you need to install myVIEW without myPRO runtime, you can download an independent installation package from our web page <http://www.myscada.org>.

Loading custom project

Download and install myDESIGNER from our web pages <http://www.myscada.org>. Create your project in myDESIGNER and download it to your PC running myPRO. If unsure, follow the Getting started tutorial provided with myDESIGNER.

System Tray Settings

When myPRO is installed, you can modify some parameters to tune up the system. With myPRO monitoring and setup utility is bundled. You can find it under Program Files -> mySCADA. By default, this utility is launched on startup, or you can launch it manually also.

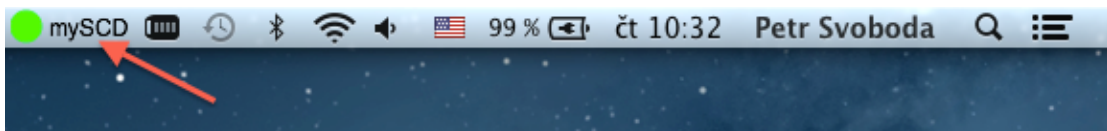
Windows and Linux:

On windows and Linux, monitoring utility can be opened from a Status Bar.



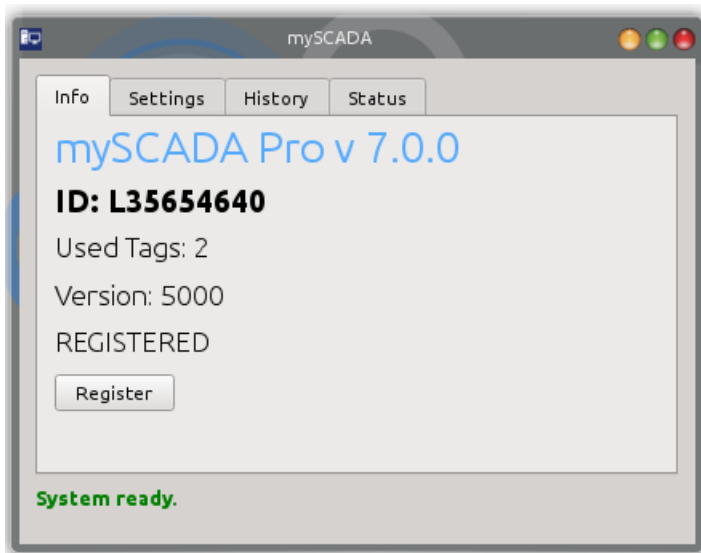
Mac OS X:

On Mac OS, utility is located in notification area on a top system bar:

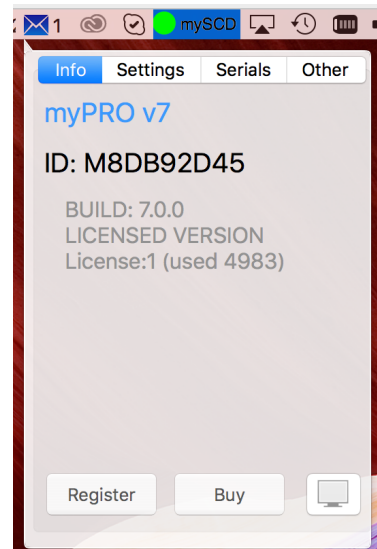


Info Screen

Info screen shows current status of myPRO Runtime:



Windows and Linux Version

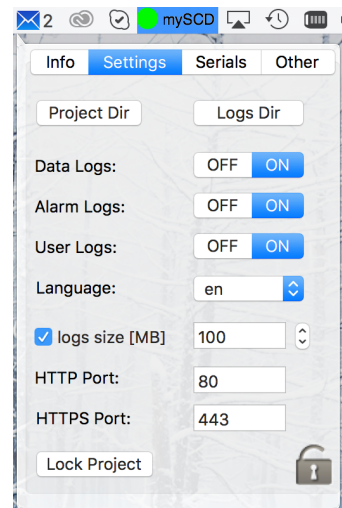
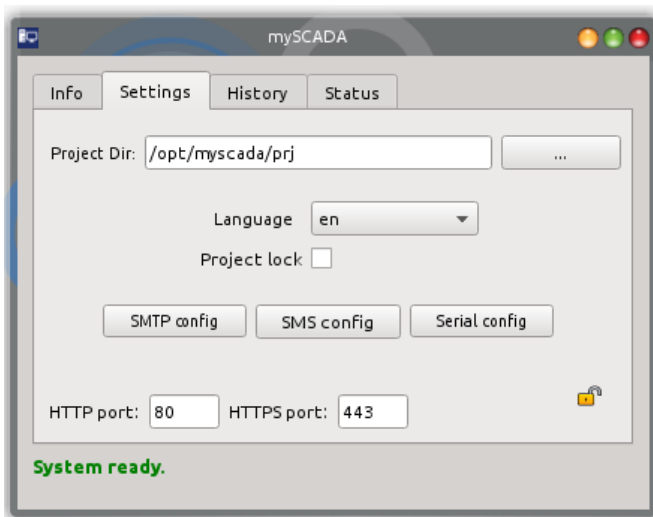


Mac OS X Version

| Parameter | Description |
|----------------------|---|
| ID: | This is unique ID of your PC. If you register myPRO, you should use this ID. |
| Used Tags: | Number of tags used in your project. This is important for buying adequate version. |
| Version: | Number of tags available. Depends on registered version. |
| Registration: | Status of your registration: UNREGISTERED/REGISTERED |

Settings Screen:

Parameters screen enables you to change important parameters of mySCADA behavior:



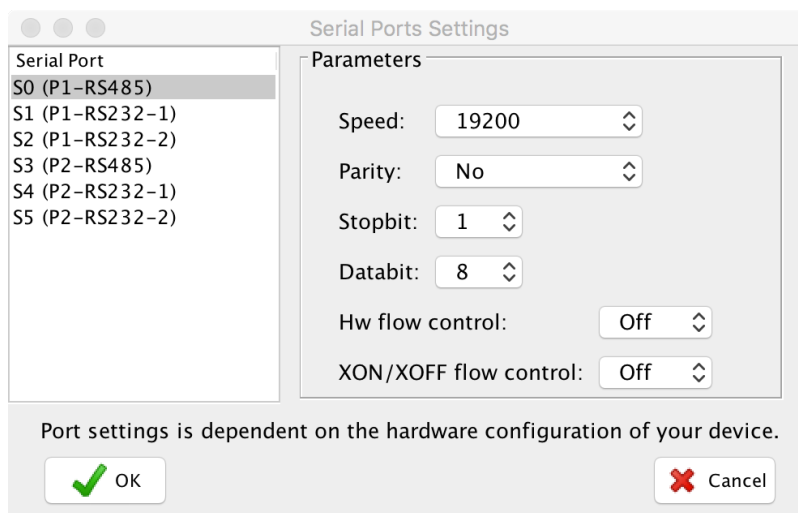
| Parameter | Description |
|--------------------|--|
| Project Dir | Directory of project data |
| Language | Change default language of mySCADA HMI – accessed over web browser |
| HTTP Port: | Change default port for accessing HMI interface. |
| HTTPS Port: | Change default port for accessing HMI interface over secure communication. |

| | |
|---------------------|--|
| Project Lock | Check to disable loading of new project into the system. |
| Lock icon | You can password protect the settings screen. Click on the lock icon to do so. |

Serial Ports:

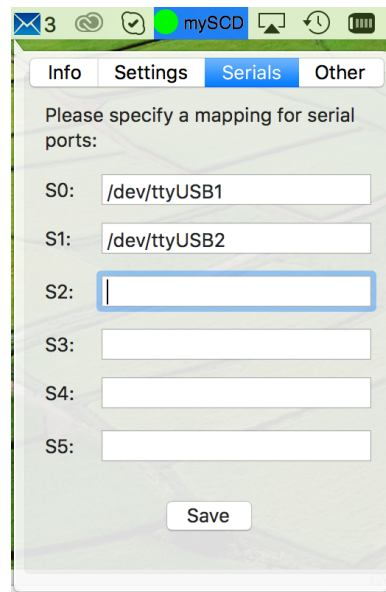
When you use serial ports for communication, you must configure them in two places:

1. In myDESIGNER in your Project settings and
 - Open myDESIGNER and click on your project, in **Properties** click on **Serial Ports**, new dialog will open:



In this dialog, please set up **HW** parameters of all serial port you wish to use.

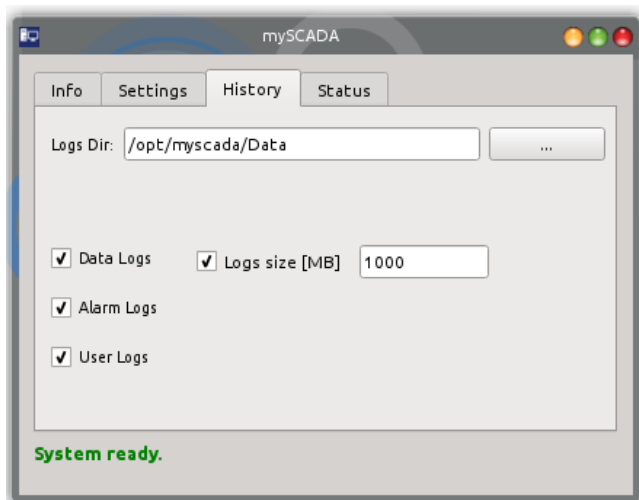
2. In **System Tray-> Serial Ports** Window fill in location of your serial ports:



3. Hit save and restart your PC.

History Screen:

History screen shows all information relevant to logging data. You can set up the path to historical log files, enable/disable logging and set maximum log size.



| Parameter | Description |
|-----------|--|
| Logs Dir | Directory where all database files are stored. This includes all data-logs, history of alarms, history of user actions and system logs |

| | |
|-------------------|--|
| Data logs | Uncheck to disable data-logging (Data-logs) |
| Alarm logs | Uncheck to disable logging of alarm history |
| User logs | Uncheck to disable logging of user actions history |
| Log Size | When enabled, you can specify maximum size (in Mbytes) of database files. In this case, when reaching a limit, oldest records are deleted as new are logged. |
| Language | Change default language of mySCADA HMI – accessed over web browser |

myPRO SMS and email Notifications

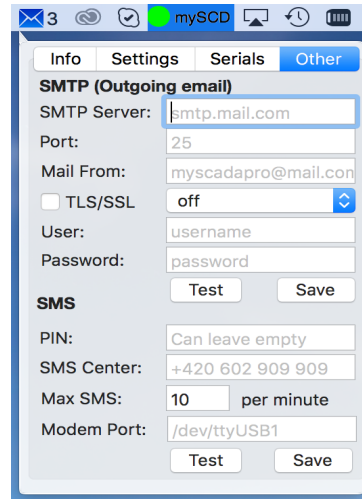
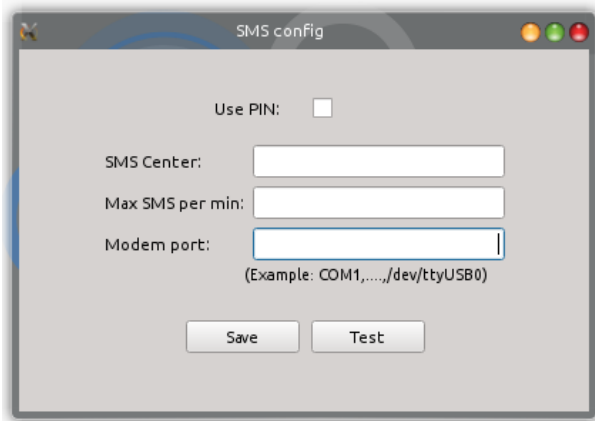
myPRO can send email and SMS notification. To do so, you must set up SMTP and SMS settings.

SMTP (Outgoing email)

To use email notifications, please set up **SMTP** parameters. You can use encryption by ticking **TLS/SSL** option and specifying encryption type.

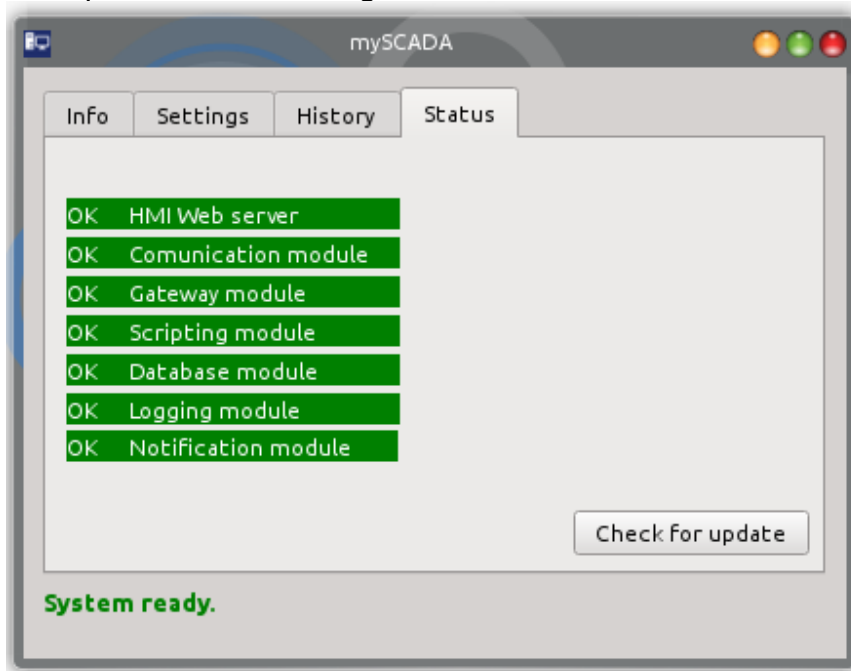
SMS

If you would like to use SMS notifications, you should connect modem over serial port. Then fill in the **Modem Port** and other required parameters. On windows the modem port will be **COM1** (or other number) on Linux and Mac it will be **/dev/ttyUSB0** or similar.



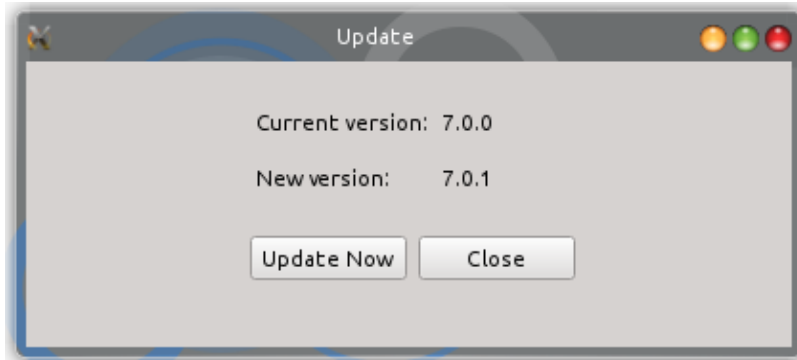
Status screen:

In status screen, you can check if all processes required for proper myPRO operation are running. If there is any service in red, it means it is not running. If so, please check the log for errors.



Updating myPRO

We recommend to keep myPRO system up to date. We are continuously working on improvements in the means of speed, new functions and important fixes. To keep your system up to date, click on Check for update button in System Tray -> status section. New dialog is shown, if new version is available, you can upgrade by clicking the **Update Now** button.



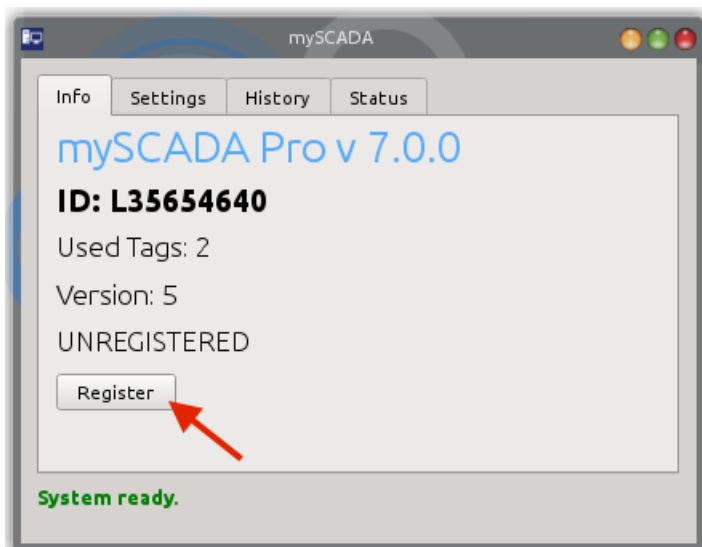
Updating myPRO without internet access

If you don't have internet access on the device running myPRO, you can download up to date installation package from web pages: www.myscada.org Simply run the installer to update your system to new version.

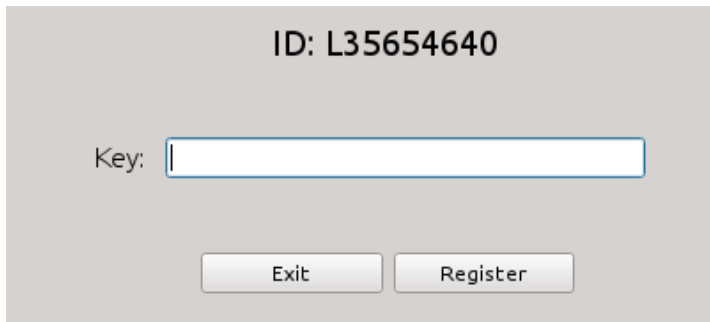
Licensing myPRO

Every installation of myPRO must be licensed in order to work correctly. If you do not license myPRO, you cannot use it in commercial environment. Every device has its unique hardware ID. You can find this HW ID in System Traywindow (please see below)

To license myPRO, open the System Tray utility and click on Register button:

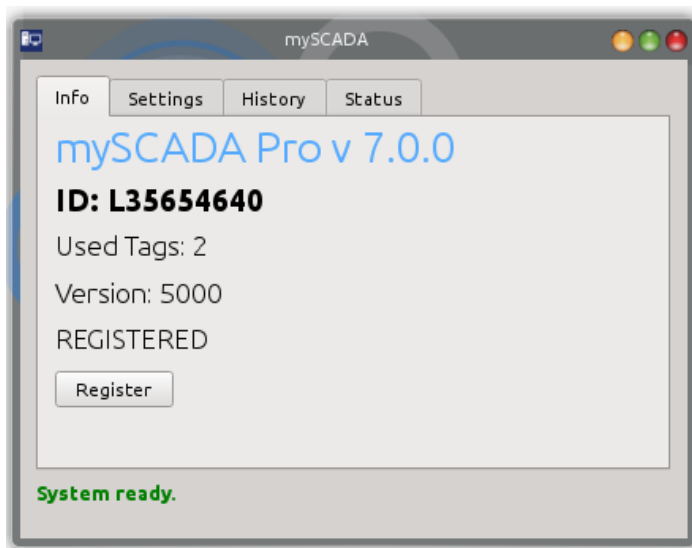


Enter the license key provided by mySCADA:



A dialog box titled "mySCADA" with a light gray background. At the top, it displays "ID: L35654640". Below this is a label "Key:" followed by an empty text input field. At the bottom, there are two buttons: "Exit" on the left and "Register" on the right.

Now the System Tray should show **REGISTERED**:



Licensing myPRO on Linux – terminal method

You can license myPRO from a command line. This option is especially useful if you are running headless system like Linux server. To license myPRO from command line, please, follow this procedure:

1. Reading the hardware ID (HW ID). Open the terminal and type:
`sudo /opt/myscada/bin/mylicence.sh -g`
2. Entering license key: open the terminal and type:
`sudo /opt/myscada/bin/mylicence.sh -s LICENSEKEY`